

ERF4001, 2.4GHz Antenna, panel mount, SMA Male connector

Features

Electrical Properties

Parameter:	Description
Frequency Band:	2,4 GHz
Nominal Impedance:	50 Ω
Polarization:	Vertical
V.S.W.R:	< 2.0



Mechanical Properties

Parameter:	Description
Antenna Type:	External Antenna
Mounting Method:	Screw Type
Connector Type:	SMA (Male)
Antenna Dimensions:	50 mm \pm 2
Antenna Cable Total Length:	RG-316/200 mm \pm 10
Operating Temperature Range:	-20°C~+60°C
Storage Temperature Range:	-30°C~+70°C

Typical applications

- Wi-Fi
- Bluetooth
- GSM
- Zigbee

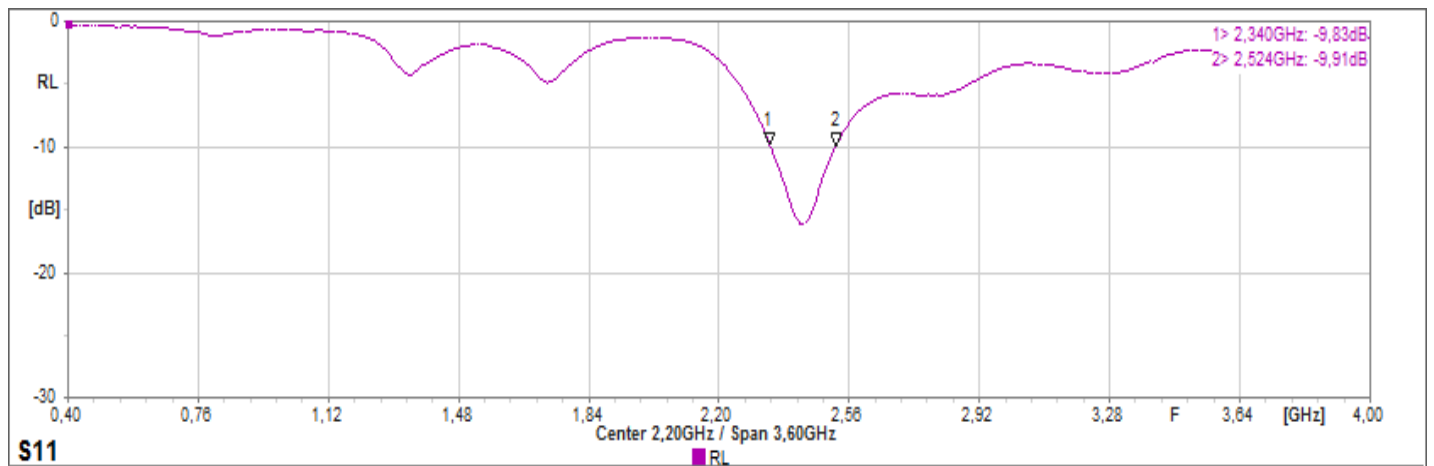
Description

The ERF4001 antenna is a black 2,4 GHz Wi-Fi antenna with a RG-316 cable and a SMA (Male) connector. The RG-316 cable allows the antenna to be panel mounted. The antenna can be used for applications such as, Wifi, Bluetooth, GSM and Zigbee.

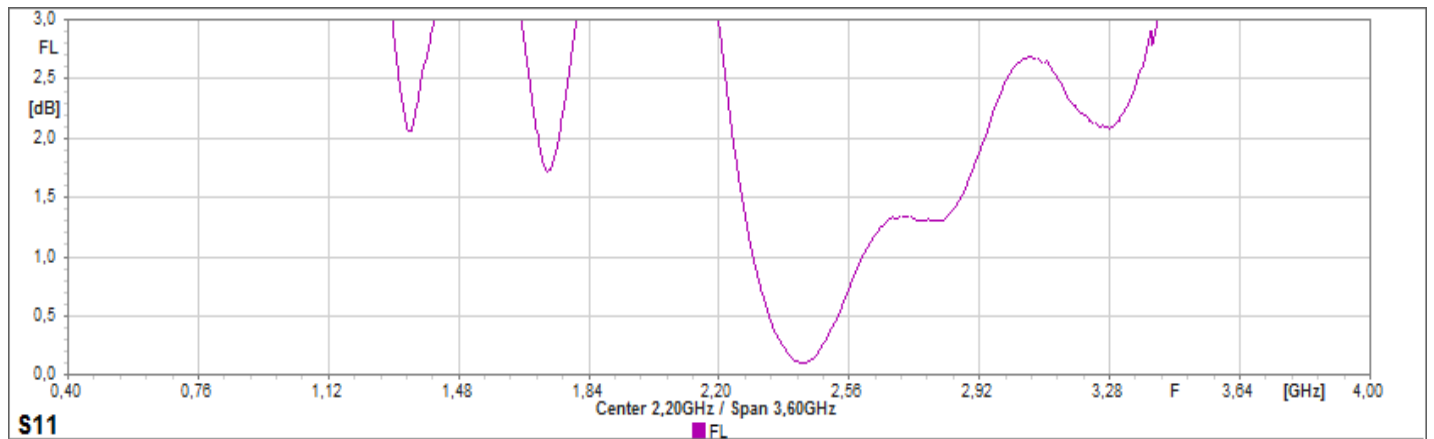
ERF4001, 2.4GHz Antenna, panel mount, SMA Male connector

Antenna Properties

Return Loss

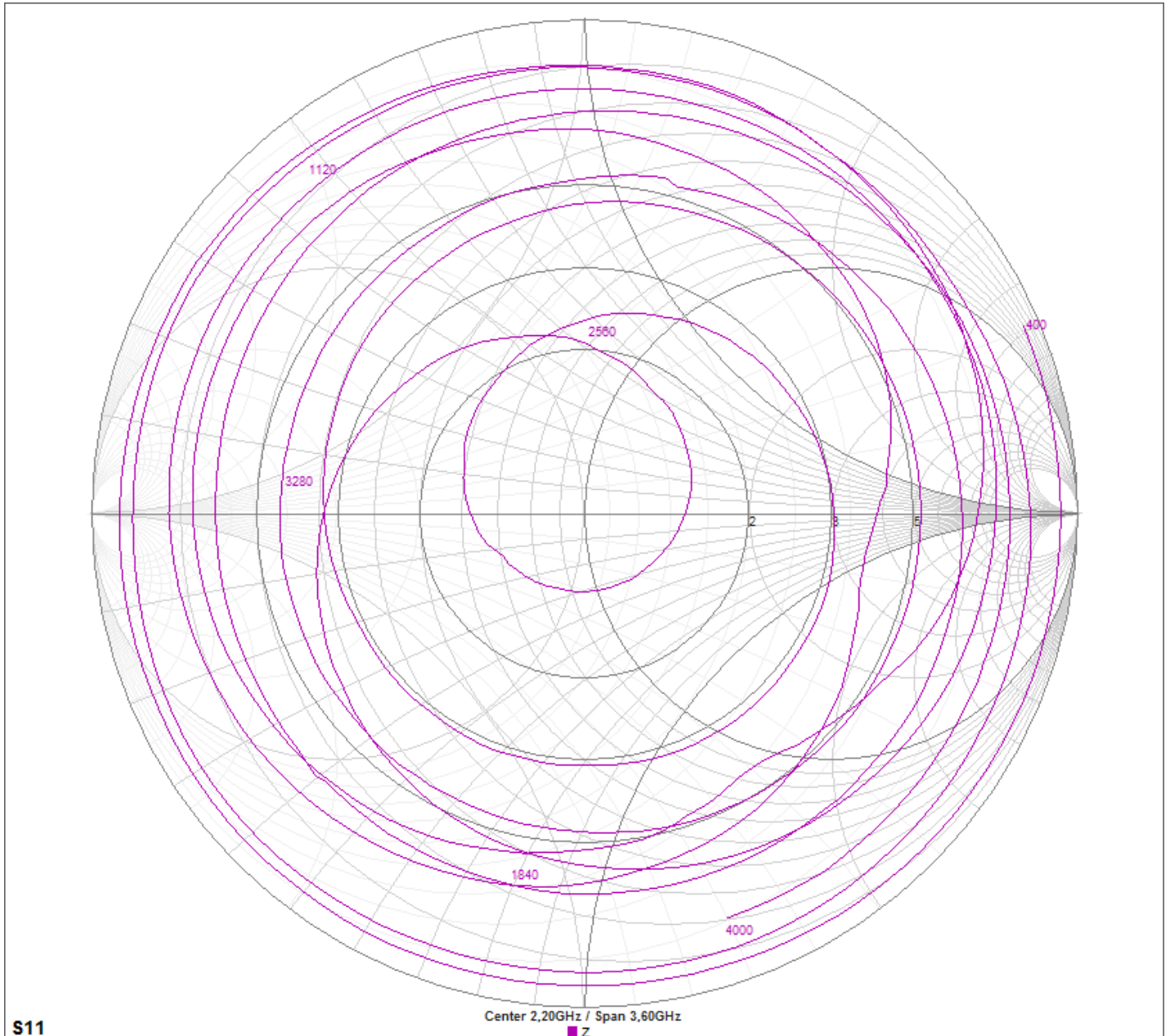


Forward Loss



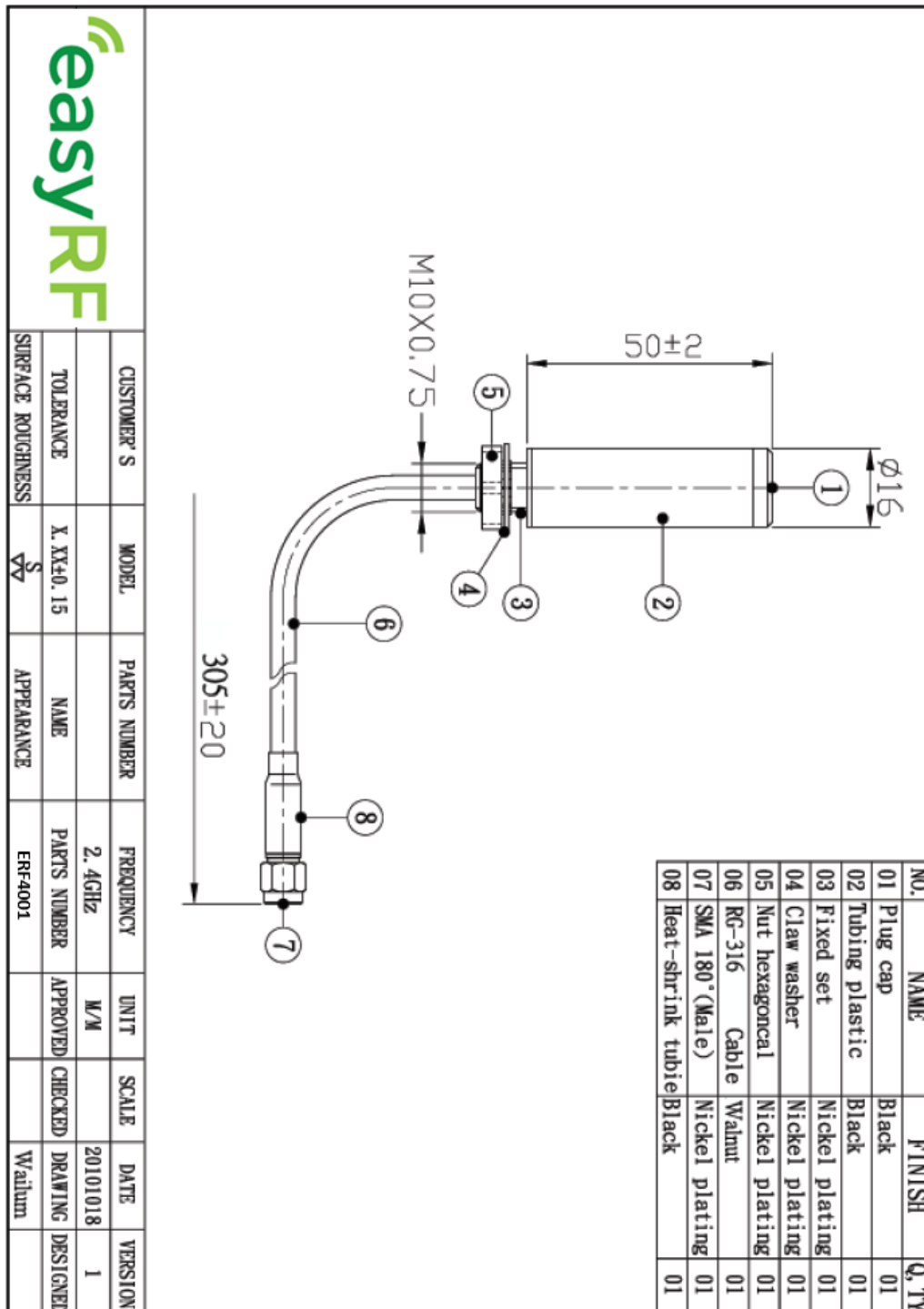
ERF4001, 2.4GHz Antenna, panel mount, SMA Male connector


Impedance



ERF4001, 2.4GHz Antenna, panel mount, SMA Male connector

Dimensions



	
CUSTOMER'S	MODEL
TOLERANCE	X.XX±0.15
SURFACE ROUGHNESS	\sqrt{S}
PARTS NUMBER	NAME
FREQUENCY	PARTS NUMBER
2.4GHz	ERF4001
UNIT	SCALE
M/M	
DATE	VERSION
20101018	1
DRAWING	DESIGNED
Walturn	

ERF4001, 2.4GHz Antenna, panel mount, SMA Male connector

Different type of SMA connectors



SMA Male



SMA Female



RP-SMA Male



RP-SMA Female

The ERF4001 antenna uses the SMA Male connector.

About easyRF

easyRF is supplier and manufacturer of wireless communication solutions with an easy-to-use approach, targeting different applications and markets. The products are standard off-the-shelf products, but customization of the products is possible.

easyRF is successful in the a wide range of markets, such as: industrial, agriculture, security, building automation.

Ordering information

Please check www.easyrf.eu for distributors in your area or contact us at info@easyrf.eu for more information. Other frequencies are available on request.

Technical support

For all product questions please contact us via info@easyrf.eu