

ERF4074, 868 MHz antenna, SMA Male connector

Features

Electrical Properties Parameter:	Description
Frequency Band:	868 MHz
Nominal Impedance:	50 Ω
Polarization:	Vertical
V.S.W.R:	2.0 : 1

Mechanical Properties

Parameter:	Description
Antenna Type:	External Antenna
Mounting Method:	Magnet
Connector Type:	SMA (Male)
Antenna Dimensions:	89 mm \pm 5
Cable length:	1000 mm \pm 20
Antenna Color:	Black
Operating Temperature Range:	-20°C~+60°C
Storage Temperature Range:	-30°C~+70°C



Typical applications

- M2M
- 868 MHz
- LoRa
- Zigbee

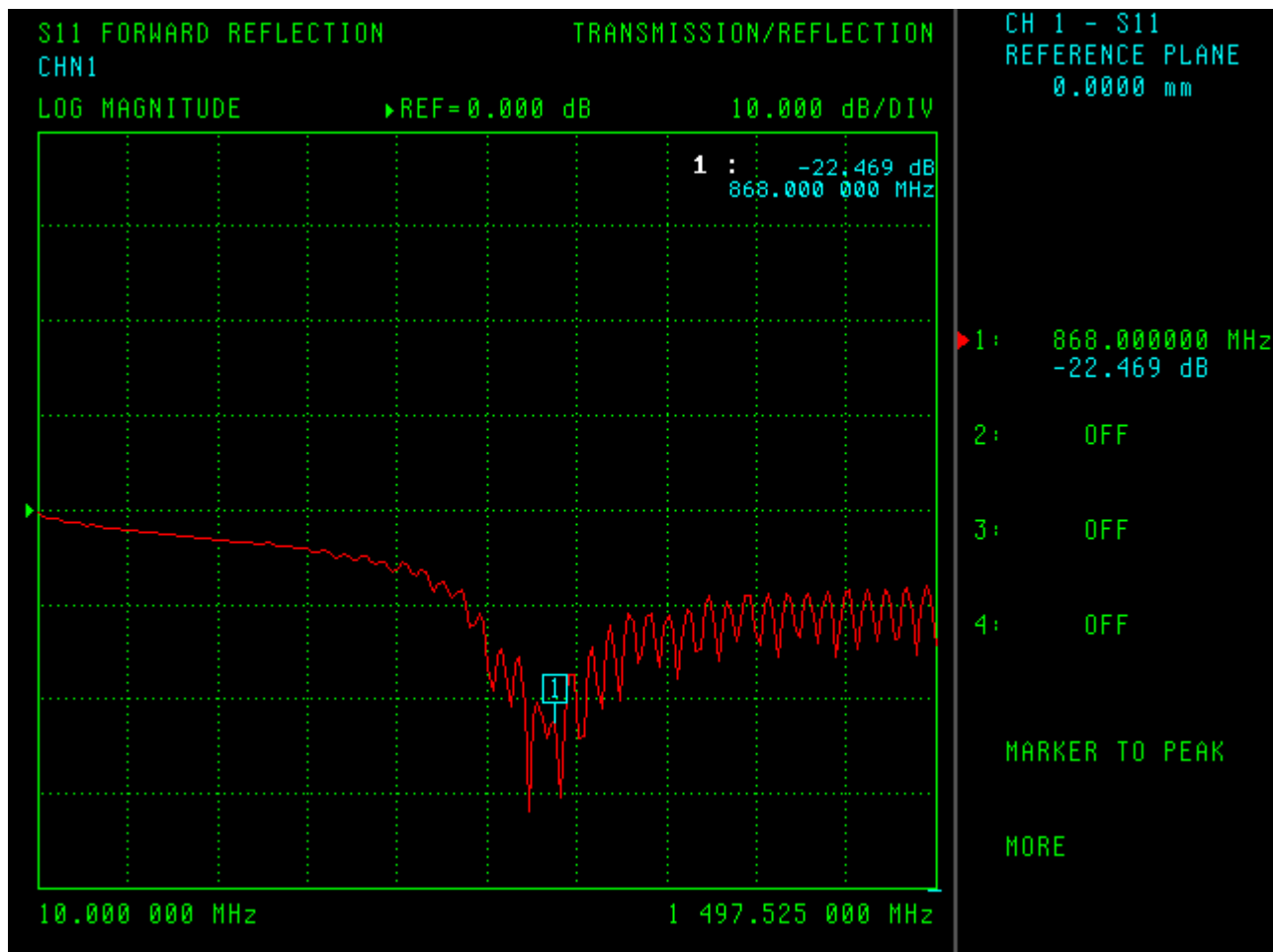
Description

The ERF4074 antenna is a black 868 MHz antenna with an SMA Male connector. The antenna can also be used in these frequency bands: 800 ~ 900 MHz. Antenna can be used for applications such as LoRa , Zigbee, IoT and more.

ERF4074, 868 MHz antenna, SMA Male connector

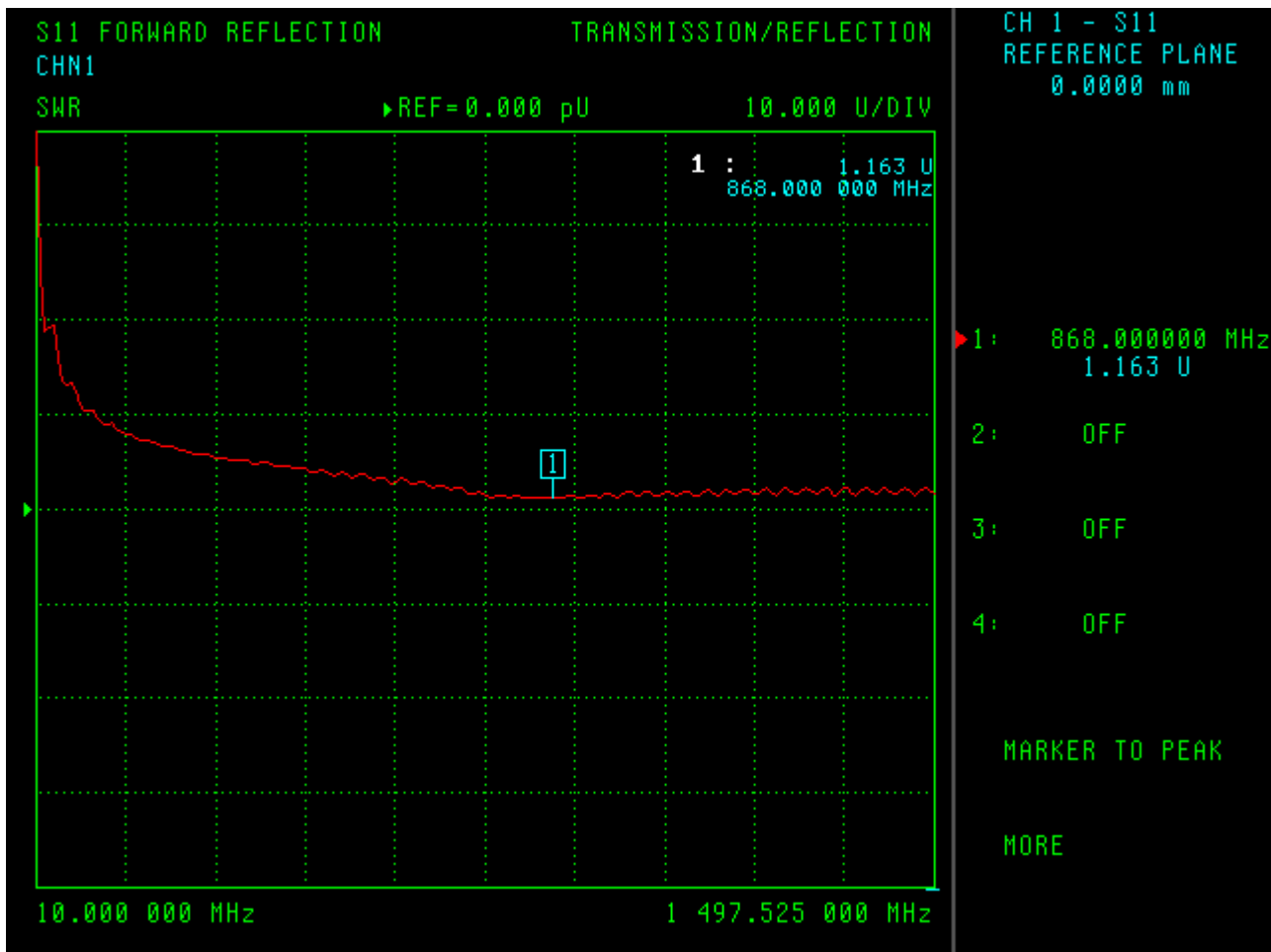
Antenna Properties

Return Loss



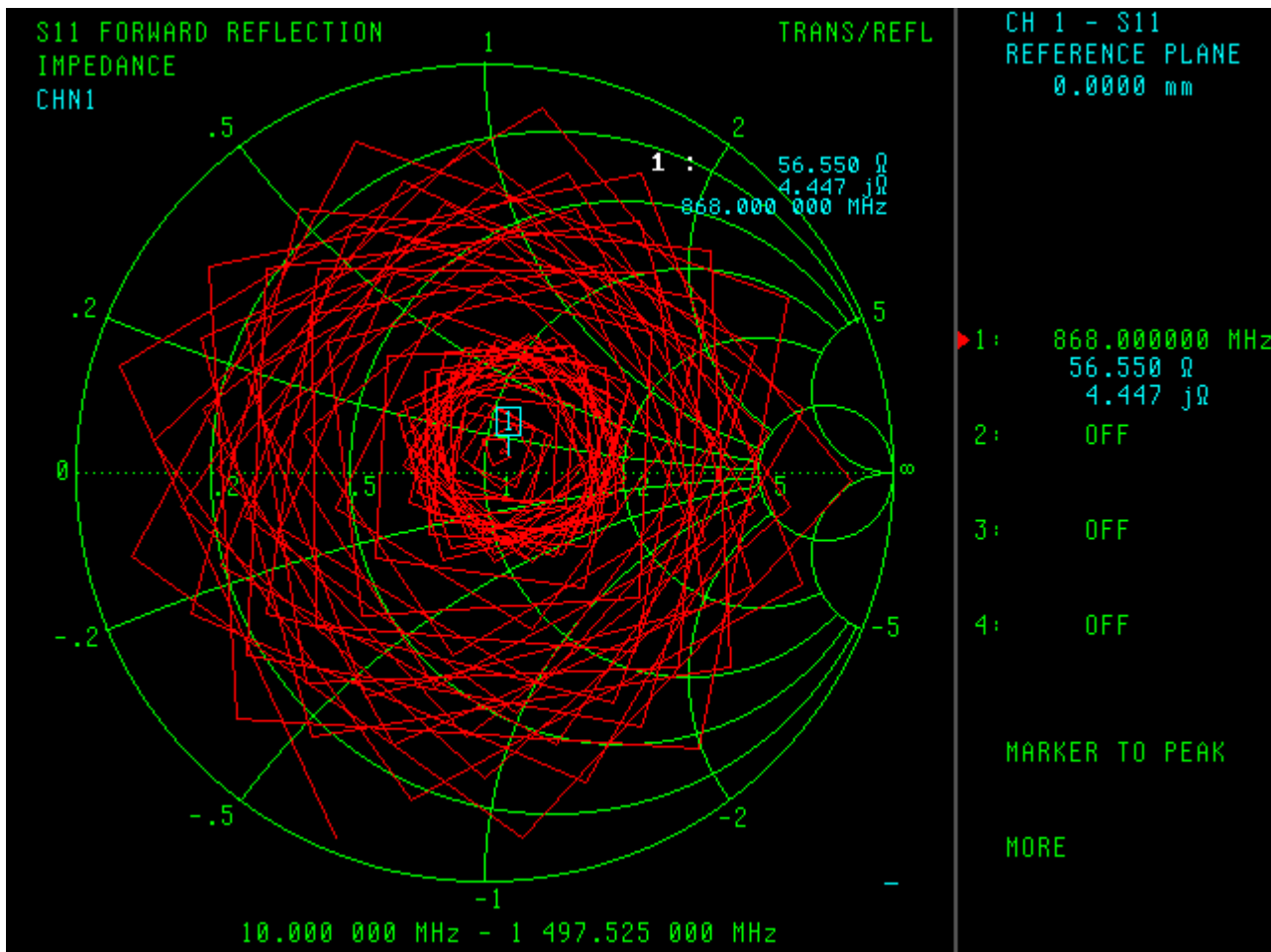
ERF4074, 868 MHz antenna, SMA Male connector

Forward Loss



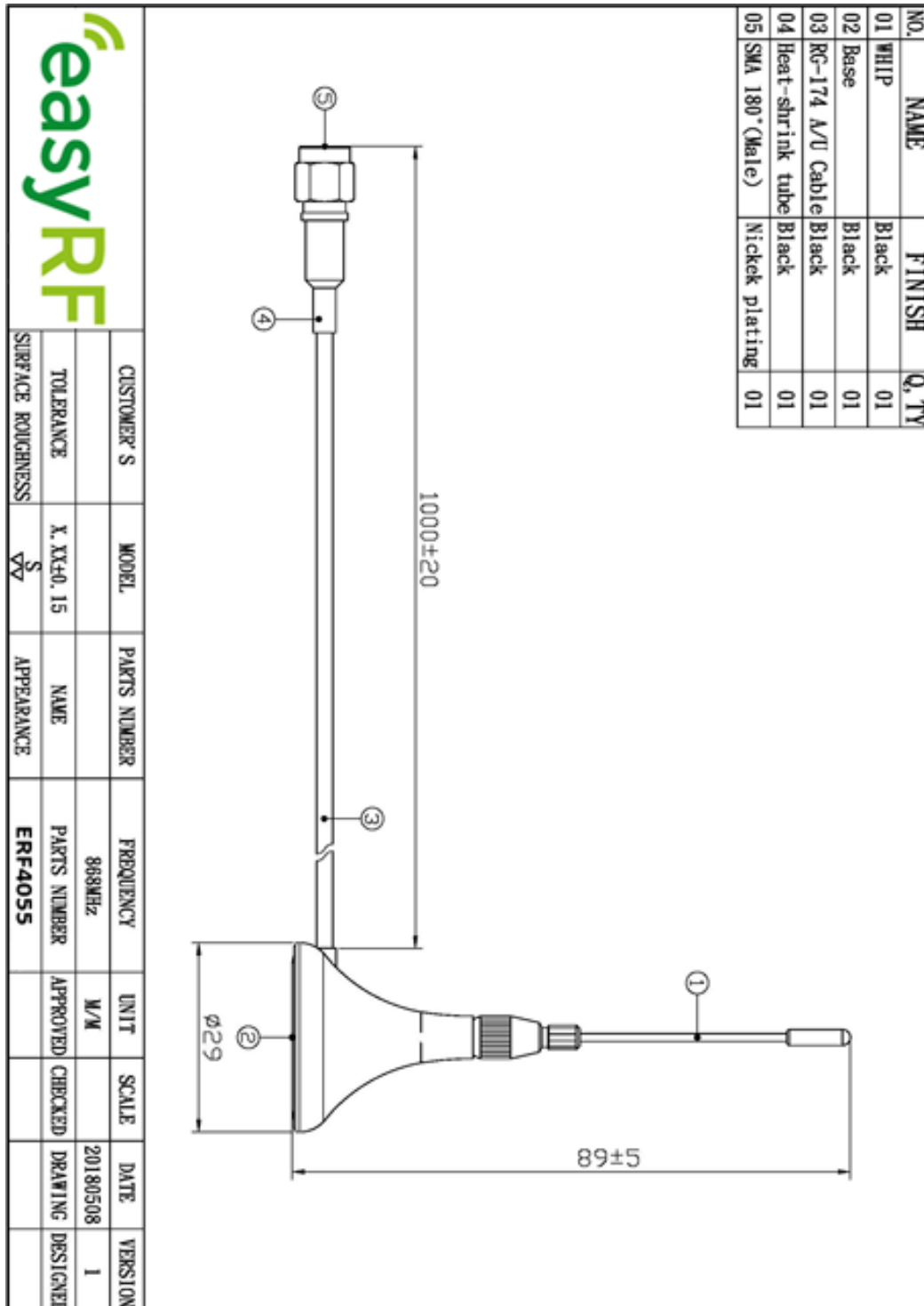
ERF4074, 868 MHz antenna, SMA Male connector

Impedance



ERF4074, 868 MHz antenna, SMA Male connector

Dimensions



ERF4074, 868 MHz antenna, SMA Male connector

Different types of SMA connectors



SMA Male



SMA Female



RP-SMA Male



RP-SMA Female

The ERF4074 antenna uses the SMA Male connector.

About easyRF

easyRF is supplier and manufacturer of wireless communication solutions with an easy-to-use approach, targeting different applications and markets. The products are standard off-the-shelf products, but customization of the products is possible.

easyRF is successful in the a wide range of markets, such as: industrial, agriculture, security, building automation

Ordering information

Please check www.easyrf.eu for distributors in your area or contact us at info@easyrf.eu for more information. Other frequencies are available on request.

Technical support

For all product questions please contact us via info@easyrf.eu